

# All-in-One DVR Quick Start Guide

Note: Please read this instruction carefully for correct use of the product and preserve it for reference purposes. All the examples and pictures used here are for reference only. There may be several technically incorrect places or printing errors in this manual. The updates will be added into the new version of this manual. The contents of this manual are subject to change without notice. This device should be operated only from the type of power source indicated on the marking label. The voltage of the power must be verified before using the same.

## 1. HDD Installation

This series of the product supports 1 SATA hard drive. Please make sure that the device is powered off before the installation. The pictures of the installation are only for reference, please take the real object as the standard.



1. Loosen the screws to open the cover.



2. Screw the screws into the HDD but not tighten them.



3. Place the HDD onto the bottom of the machine.



4. Connect the power and data cables.

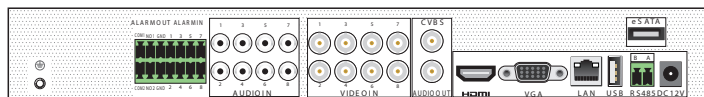


5. Turn over the machine and secure the HDD with the screws.

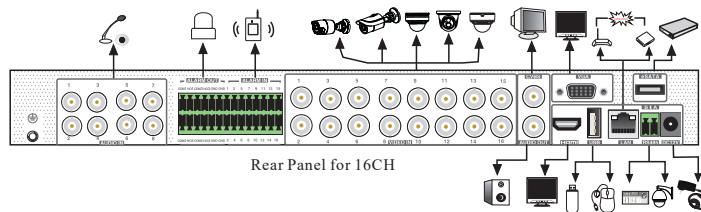


6. Install back the cover and secure it with the screws.

## 2. Rear Panel Installation



Rear Panel for 8CH



Rear Panel for 16CH

Name	Description
ALARM OUT	Relay output; connect to external alarm
ALARM IN	Alarm input for connecting sensors
GND	Ground
AUDIO IN	Audio input
VIDEO IN	Video input
CVBS	CVBS output
AUDIO OUT	Audio output
HDMI	Connect to high definition display device
VGA	Connect to monitor
LAN	Ethernet connector
USB	Connector for USB devices
e-SATA	Connector for e-SATA
RS485	Connector for RS485 devices. A is TX+, B is TX-
DC12V	Power input

The interfaces of the rear panels are for reference only.

## 3. Startup & Shutdown

### • Startup

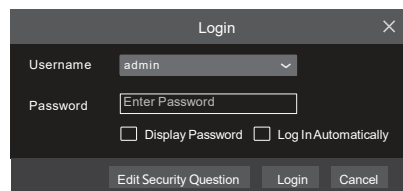
1. Connect the monitor and the power.
2. The device will boot and the power indicator will display blue.
3. A wizard window will pop up.

### • Shutdown

Go to "Main Menu" and then select "Shutdown" icon. This will bring up a shutdown window. The device will shut down by clicking "OK" button. Then disconnect the power.

## 4. Login

For our HT800A series DVRs, the **default username is admin** and the **default password is 123456**. When starting HT800A series DVR for the first time, you will see a prompt to begin a startup wizard. You can skip this wizard if you would like, but it will help you configure basic settings for your DVR. The wizard may allow you to also change the default password for better security. If you decide to skip the wizard, to access the live view and start using your DVR click on the Start button in the bottom left of the menu bar on the bottom of the screen and then click on Login and enter in the default password.



## 5. Analog Camera Connection

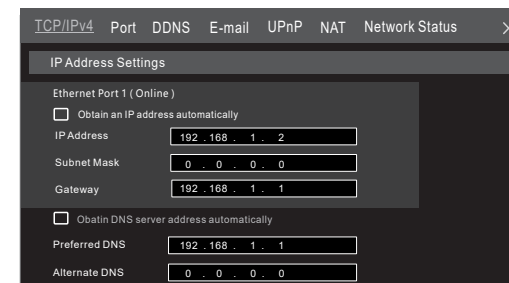
First connect the camera to the DVR. Then go to Start → Settings → Camera → Manage Camera → Signal Access Set to checkmark the video mode. The actual signals input shall correspond to the video mode. Please refer to User Manual for details.

## 6. Network Configuration & Add IP Camera

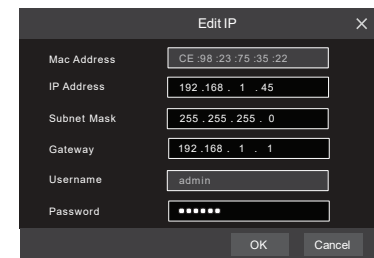
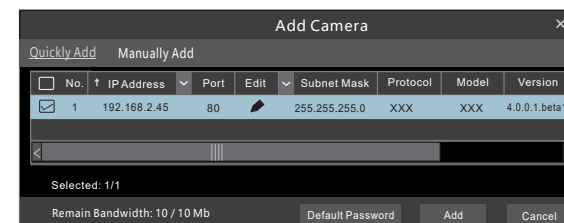
After you finish adding IP cameras, you can see the live images through the monitor of the DVR. The following will mainly introduce how to add the IP cameras via LAN/WAN.


### • LAN

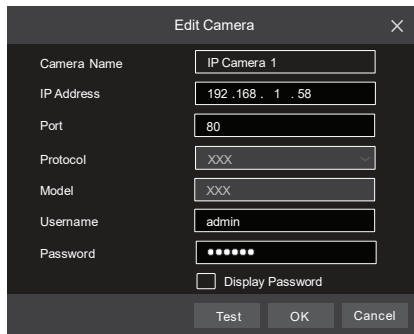
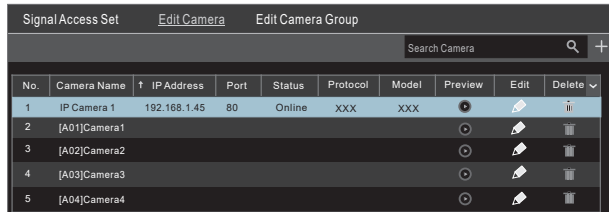
1. Set the network of the DVR. Go to Start → Settings → Network → TCP/IPv4. Input IP address, subnet mask, gateway, etc. If using DHCP, please enable DHCP in both the DVR and the router.
2. Go to Start → Settings → Network → Port. Input HTTP port (the default value is 80), server port (the default port is 6036).
3. Click "Apply" to save the settings.




4. Go to Start → Settings → Camera → Add Camera. The DVR will automatically refresh the cameras searched. The IPC which supports the Onvif protocol may be added manually. If the IPC searched is not in the same local network as the DVR, you should select the device and click to modify the IP address.



- Checkmark the device you want to add and then click "Add" button. The DVR will automatically refresh the cameras and return to "Edit Camera" interface. "Online" status means connecting the device successfully and you will see the live image. You may select the added device and click  button to modify channel, IP address, ect.

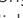


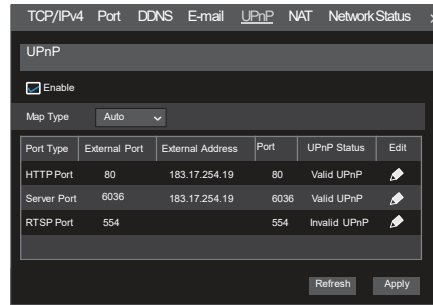
## • WAN

- Set the network of the DVR. Go to Start → Settings → Network → TCP/IPv4. Input static IP address or enable PPPoE and then input the user name and password received from your ISP.
- Go to Start → Settings → Camera. Click "Add Camera" or  behind the column of the search camera and select "Manually Add" to add the IP cameras. Input IP address, server port, username and password of the IP camera. The IP camera must be connected over WAN. And here the IP address of the IP camera must be a WAN IP address.

## 7. UPnP

You can use the UPnP function to enable the fast connection of the

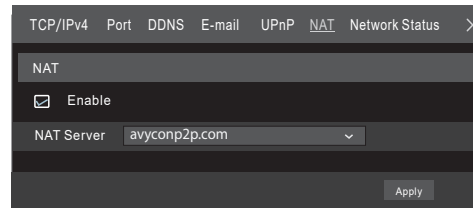
- Go to Start → Settings → Network → UPnP, and enable UPnP and then click "Apply" button to save.
- Enable the UPnP function in the router.
- Click "Refresh" button to refresh the UPnP status. If the UPnP status were still "Invalid UPnP" after refreshing it for several times, the port would be wrong. Please change the mapping type to "Manual" and then click  to modify the port until the UPnP status turns to "valid UPnP".



## 8. NAT

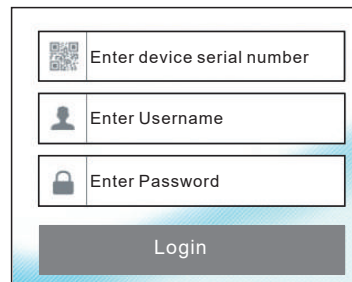
### • NAT Setting


- The DVR shall be powered on and connected to the network.
- Go to Start → Settings → Network → TCP/IPv4. You can obtain the IP address, subnet mask and gateway automatically. You can also manually enter them according to the actual network situation. Please make sure the network segment is the same as that of the network which is used.
- Set the preferred or alternative DNS Server. Click "Apply" to save the parameters.
- Go to Start → Settings → Network → NAT tab. Enable NAT and select the NAT Server (The default NAT Server is avyconp2p.com). Click "Apply" to save the parameters.





### • NAT Access

After finishing the NAT settings, you can input www.avyconp2p.com in the IE address bar and then press enter to go to the following interface. If you are the first time to access the NAT, you shall download and install the ActiveX according to the popup tips. After installing ActiveX successfully, it will pop the login box.



**Device Serial Number:** Click  on the menu bar at the bottom of the live interface to check the serial number or go to Start → Settings → Network → Network Status to check the serial number of the DVR).  
**Username:** The username of the DVR. The default username is admin.  
**Password:** The password of the DVR. The password is set by yourself when you configure the wizard for the first time.

## 9. Manual Recording

Before recording, please install and format a HDD. In the live interface you can see the menu toolbar. Click  button to start recording. Click it again to stop recording. You can also click  to check the status of the recording.





## 10. Playback

### • Instant Playback

Click "Instant Playback" in the right-click menu of the camera's preview window to select or drag the playback progress bar to change the playback time to play back the record.

### • General Playback

Click  on the tool bar at the bottom of the live preview interface or click Start → Playback to go to the playback interface as shown below. You can also add the playback cameras manually. Click  in the playback window to pop up the "Add Camera" window. Check the cameras in the window and then click "Add" to add playback camera. The record files of the added playback camera will be played in the playback interface.

