

AVYCON

Keyboard Controller AVK-P2500

User`s Manual



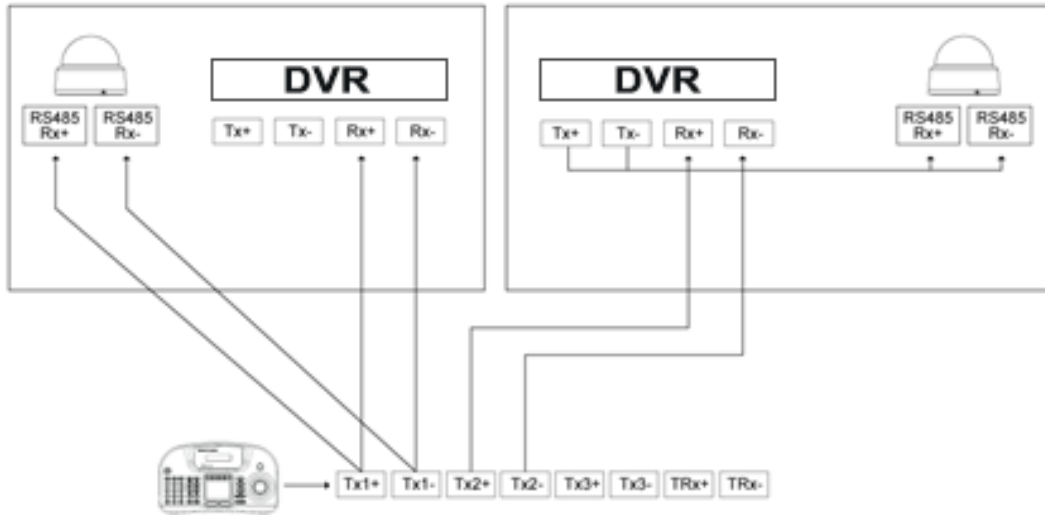
11. KEYBOARD CONTROLLER (AVK-P2500)

11.1 Connection

- A user may connect cameras and Keyboard to a DVR.
- Please see below for connection examples. RS485 ports are used for connections.

11.1.1 Configuration Diagram

- Example



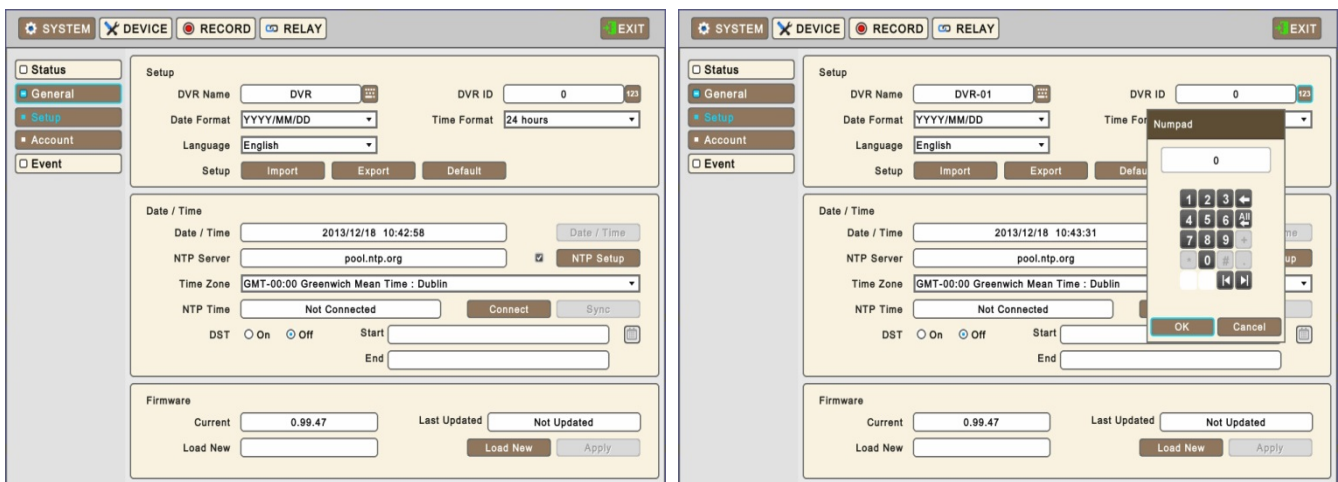
- Please make sure to connect “Tx to Rx” or “Rx to Tx” with same polarity. (+ to +) and (- to -).

11.1.2 USB Connection

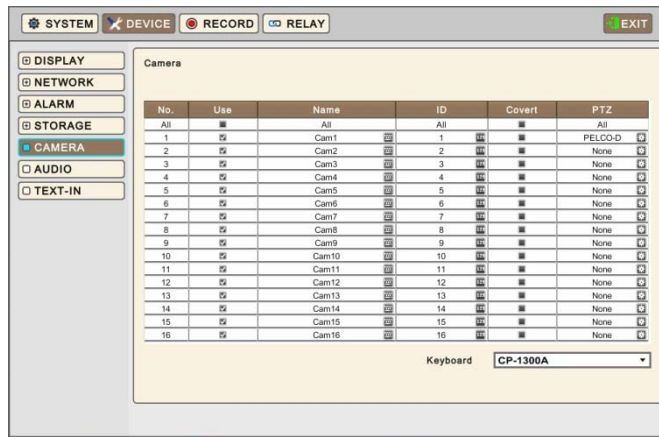
- In order to use Touch Pad on AVK-P2500 , a user should connect AVK-P2500 and DVR with provided USB cable.
- DVR will automatically recognize the Touch Pad.

11.2 Keyboard Setup in DVR

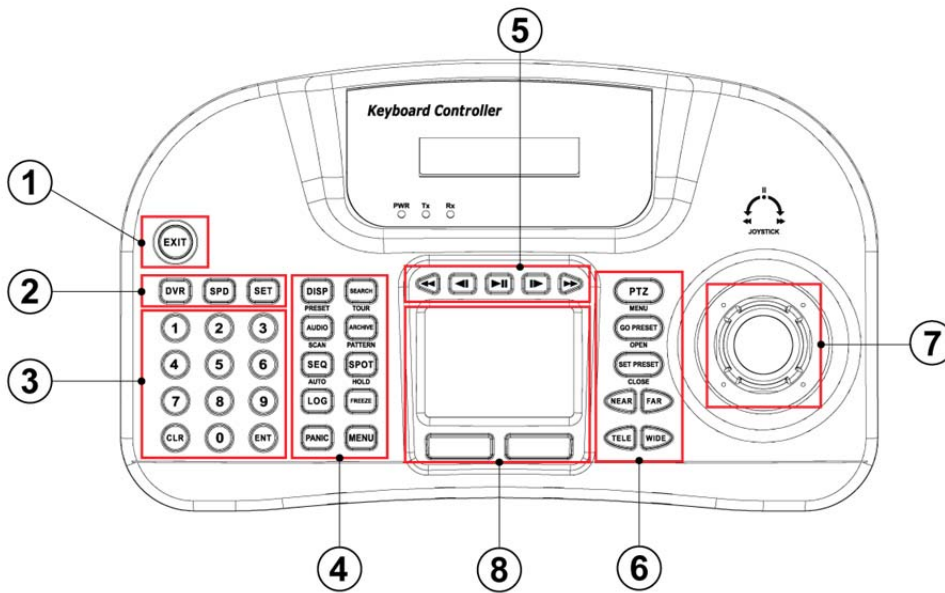
- Enter “Setup>SYSTEM>General>Setup” and define the ID of DVR.
- When a user connects more than two DVRs then each DVR has to have a different ID.



- Then move to “Setup>Device>Camera” and select AVK-P2500 .
- Then, choose PTZ protocol and Camera ID. (For detailed information on setting PTZ camera, please refer to DVR manual)



11.3 Keyboard Configuration



	KEYS	DVR Mode		SPD mode
		DVR control Mode	PTZ Mode	
①	EXIT	EXIT Key	N/A	N/A
②	DVR	DVR Mode select Key		
	SPD	SPD Mode select Key		
	SET	Setup Key		
③	0 ~ 9	Number Pad Key		
	CLR	Clear Key		
	ENT	ENTER Key		
④	DISP (PRESET)	Display Key	N/A	Preset Key
	AUDIO (SCAN)	Audio Key	N/A	Scan Key
	SEQ (AUTO)	Sequence Key	N/A	Auto Key

		System Log Key	N/A	N/A
		Emergency recording Key	N/A	N/A
	 (TOUR)	Search Key	N/A	Activate Tour Key
	 (PATTERN)	Archive Key	N/A	Activate Pattern Key
	 (HOLD)	Spot control Key	N/A	Hold Key
		Pause on Live Key	N/A	N/A
		DVR Menu Key	N/A	N/A
⑤		REW Key	N/A	N/A
		Backward Key	N/A	N/A
		Play/Pause Key	N/A	N/A
		Forward Key	N/A	N/A
		FF Key	NA	N/A
⑥	 (MENU)	PTZ Mode Key	N/A	Camera Menu Key
	 (OPEN)	N/A	Activate Preset Key	Open Iris Key
	 (CLOSE)	N/A	Set Preset Key	Close Iris Key
	 	N/A	Focus control Key	Focus control Key
	 	N/A	Zoom control Key	Zoom control Key
⑦	JOYSTICK	Direction key	Pan, Tilt, Zoom	
⑧	Touch Pad	Mouse	N/A	

11.4 Setup

11.4.1 DVR Control Mode

• Press **1** + **SET** in DVR Mode to enter Main Setup and enter password. (Default password is 0000)

Keyboard	Detail	Option
VER	Firmware version	-
DATE	Date setting	YY/MM/DD
TITLE SET	Camera title	-
CONTROL ID	ID No. Change	-
DVR SPD	Set Baud rate	2.4Kbps~57.6Kbps
COMM	Communication setting	RS422 / RS485
BACKLIGHT	Backlight setting for LCD	OFF / ON / AUTO
SLEEP	Sleep mode setting	OFF / 1Min / 5Min / 10Min / 30Min / 1 Hr
BUZZER	Buzzer setting	OFF / ON
TERMINATE	Termination	OFF / ON
JOYSTICK SPD	Joystick speed	50MS~300MS
PASSWORD	Change password	Default password: 0000
FACTORY SET	Factory reset	-
SAVE/EXIT	Save and Exit	NO / YES

11.4.2 Speed Dome Setup

• Press **2** + **SET** in SPD Mode to enter Speed Dome Setup and enter password. (Default password is 0000)

Keyboard	Detail	Option
ADDRESS	Camera ID number	1~255
MODEL	Select Camera	-
PROTOCOL	Set Protocol	PEL-D / PEL-P / W-DRX / SAM-E / LGP / SAM-T / PANAS / VICON / AD / HWELL
BAUDRATE	Set Baud rate	2.4Kbps~57.6Kbps
PARITY	Set Parity	NONE / EVEN / ODD
PROP	Set Camera speed	Slow PTZ => PROP: ON Speed PTZ => PROP: OFF

11.4.3 Joystick Calibration

• Press **3** + **SET** to enter Joystick Calibration and enter password. (Default password is 0000)

Keyboard	Detail	Option
PTZ OFFSET	Rest position value setting	-
PAN LEFT	Left Pan value setting	-
PAN RIGHT	Right Pan value setting	-
TILT UP	Tilt Up value setting	-
TILT DOWN	Tilt Down value setting	-
ZOOM WIDE	Zoom Wide value setting	-
ZOOM TELE	Zoom Tele value setting	-

11.5 Operation

11.5.1 DVR/SPD Mode Conversion

- Press “System ID” + “DVR” to enter DVR control Mode.
- Press “Speed Dome Camera ID” + “SPD” to enter PTZ camera control Mode.

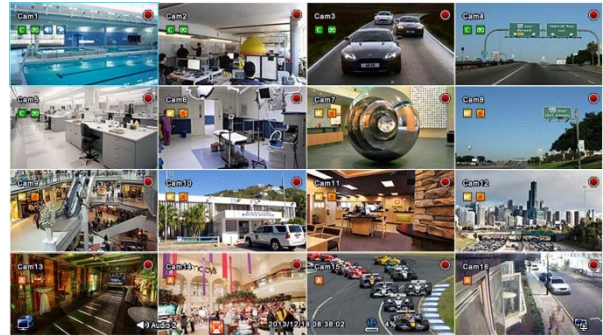
Example

- If a user wishes to connect to SYSTEM ID 3 DVR then press Num Pad “3” + “DVR”.
- If a user wishes to connect to Speed Dome camera ID 3 then press Num Pad “3” + “SPD”.

11.5.2 DVR Control Mode

11.5.2.1 Connection

- If the DVR Control Mode is selected followings will display on Keyboard LCD and Live OSD as “KBD: #” on the right-bottom corner.



- Then, a user should be able to operate the DVR functions by AVK-P2500 .

11.5.2.2 Buttons

- In DVR control mode, all buttons are operated according to texts written on each button. The functions are same as Front buttons of DVR as follows:

- **DISP** : Change display mode on Live and Playback in sequence of 1CH>4CH>9CH>16CH>1CH.
- **AUDIO** : Activates and the AUDIO function and change Audio channel
- **SEQ** : Turn on/off Sequence function. Only supports 1CH, 4CH, 9Ch display mode
- **LOG** : Pop up System Log
- **PANIC** : Active Emergency recording.
- **SEARCH** : Pop up Search Menu in Live or switches to Live in Playback mode.
- **ARCHIVE** : Pop up Archive window.
- **SPOT** : Change the channel of a monitor connected to the Spot output.
- **FREEZE** : Freeze a current image in Live mode ONLY.
- **MENU** : Pop up Setup window.
- **PTZ** : Enter PTZ control mode and able to use PTZ function of DVR.

- ⏪, ⏩, ⏮, ⏭, ⏯ : Playback control in DVR Search Mode.

- ENT : View a channel in full screen (by selecting a number with ENTER button).

NOTE

• For detailed information on PTZ Mode, please refer to **4.3.5 Camera**.

11.5.2.3 PTZ Mode

• In order to enter PTZ mode, press “Camera ID” + “PTZ”.

NOTE

• PTZ Mode only can be switched from DVR Mode.

• If the PTZ Mode is selected following will display on Keyboard LCD and OSD



• Then, a user should be able to operate the PTZ camera with AVK-P2500 .

• In PTZ mode, all buttons are operated according to texts written on each button. The functions are same as Front buttons of DVR as follows:

- # + “GO PRESET” : will move to saved Preset point.

- # + “SET PRESET” : will save new Preset point under #.

- Press “NEAR” “FAR” to adjust the Focus.

- Press “TELE” “WIDE” to activate the Zoom.

WARNING

• DEPENDING ON THE PROTOCOL BEING USED BY THE SPEED DOME CAMERA, CONTROLLING CAMERA MENU COULD BE DIFFERENT. PLEASE CHECK SPEED DOME CAMERA MANUAL.

11.5.3 SPD Control Mode (Speed Dome)

11.5.3.1 Connection

• If the SPD Control Mode is selected followings will display on Keyboard LCD:



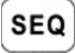
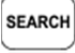
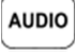







- Then, a user should be able to operate the Speed Dome camera directly with AVK-P2500 .

NOTE

- Please check Protocol and Baud rate before operating the Speed Dome Camera using AVK-P2500 .

11.5.3.2 Buttons

-  (**PRESET**): Press number Key and PRESET then the camera will move to designated point.
-  (**PATTERN**): Press number Key and PATTERN then the designated Pattern will run
-  (**AUTO**): Press number Key and AUTO then the designated Auto will run.
-  (**TOUR**): Press number Key and TOUR then the designated Tour will run.
-  (**SCAN**): Press number Key and SCAN then the designated Scan will run.
-  (**HOLD**): Press HOLD to lock the Keyboard. To unlock a user has to input Password. (Default password is 0000)
-   : Press NEAR/FAR to adjust the focus of Speed Dome camera.
-   : Press TELE/WIDE to adjust the zoom of Speed Dome camera.

NOTE

- SPD Control Mode is only supported when Speed Dome Camera is directly connected to AVK-P2500 .

WARNING

- DEPENDING ON THE PROTOCOL BEING USED BY THE SPEED DOME CAMERA, CONTROLLING CAMERA MENU COULD BE DIFFERENT. PLEASE CHECK SPEED DOME CAMERA MANUAL.

NOTE

- **When a Key does not Work after Set up**
 - If the communication speed of DVR and CP are not co-related, it may not work. Please make sure the Baud rate of Keyboard sets on 9.6kbps.
 - Press the button to enter PTZ mode and switch to DVR mode again.
 - Please reboot the DVR.
- **When Tx Blinks Continually on the LED Window**
 - If Tx blinks continually without any operation, it may be caused by improper set up of Joystick.
 - OFFSET of the Joystick may not appropriately set up.
 - Please do Joystick calibration.