

AVC-THN11FT-F35

Thermal IP Camera

Thermal



Functions

- Uncooled IRFPA Microbolometer
- Temperature Detection
- Effective Pixel 396 x 264
- 8 / 15 / 25 / 35 / 50mm Lens Optional
- Sensitivity ≤ 40mK
- Support temperature Detection & Alarm
- Support 17 COlor Control
- Support DVE Image Enhance
- 2 / 1 Alarm In / Out

Features

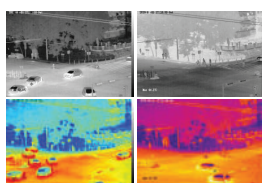


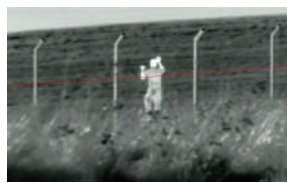
IMAGE COLOR MODES

White Hot/Back Hot/
Iron Rainbow/ Rainbow
up to 17 Modes



TEMPERATURE DETECTION

Maximum Temperature
Measure From Area, up
to 8 Areas



IVS SECURITY

Video Analytics with Perimeter,
Single Virtual Fences, Double
Virtual Fences, Object Left,
Object Removed



Compatibility

ONVIF Compatible, Also Provide
CGI and SDK for Integration

Specifications

THERMAL CAMERA	
Detector Type	Uncooled IRFPA Microbolometer
Effective Pixels	400(H) x 300(V)
Pixel Size	20 um
Sensitivity(NETD)	50mK @F1.0, 300K
Spectral Range	8 ~ 14um
Image Setting	Polarity LUT / DVE/Mirror/FCC/3D DNR Brightness/Contrast/ROI
Color Palettes	Black-Heat/White-Heat/Rainbow/IronRed up to 17 Modes
Pan/Tilt/Rotation Range	Pan: 0°~360° ;Tilt: 0°-90°;0°~360
THERMAL LENS	
Lens Type	Fixed
Focus Control	Manual Focus
Focal Length	35mm
F No.	F1.0
Angle of View	H: 10.5° V: 7.8°
Temperature Detect	(0.8m*0.8m) 700m
Distance Fire Recognition	(1.8m*0.5m) 525m
Distance Man Recognition	(2.3m*2.3m) 1160m
Distance Vehicle	
VIDEO and Audio	
Compression	H.265, H.264, MJPEG
Framerate	Main Stream:D1 @25/30fps , sub Stream: CIF@25/30fps
Bit Rate Control	CBR/VBR
Bit Rate	100Kbps~6Mbps
Region of Interest	Off/ On (8 Zone, Rectangle)
Electronic Image Stabilization(EIS)	N/A
Digital Zoom	16x
Mirror	Support
Defog	Support
Motion Dection	Support
Privacy Masking	Off/ On (5 Area, Rectangle)
DVE Image Enhance	Support
Audio Compression	G.711, AMR, RAW_PCM(Optional)
Intelligence	
Intelligent Functions	Motion Detection, Disk Alarm, I/O Arlarm, Temperature Alarm
IVS	Oerimeter, Single Virtual Fences, Double Virtual Fences, Object Left, Object Removed
INTERFACE	
Ethernet	1 Ethernet(10/100 Base-T) RJ-45 Connector
Audio Interface	1CH Audio In / 1CH Audio Out
Alarm	2CH Alarm I / 2CH Alarm Out
RS485	Support
BNC Output	Support
Reset Button	Support

TEMPERATURE DETECTION	
Temperature Detection	Point Detection, Area Detection
Temperature Alarm	Over Temperature, Temp. Difference alarm
Precision	±2 / ±2%
Detection Area	Support 8 Areas
Response Time	≤ 30ms
Effective Temp.	-10°C ~ 50°C (14°F~122°F)
Working Environment	
Theory of Temperature measurement range	-30°C~ 200°C (-22°F~392°F)
Temperature Display mode	Temp. Target > 5?, Display Absolute Temp. Value; Temp. Target ≤ 5, Display Realtime Value(Temp difference DEV = Highest Value - Average)
NETWORK	
Ethernet	RJ-45(10/100Base-T)
Protocols	IPv4/IPv6,HTTP, RTSP/RTP/RTCP, TCP/UDP,DHCP, DNS, PPPOE, SMTP, SIP, 802.1x
Interoperability	ONVIF, CGI
Streaming Method	Unicast
Max. User Access	10 Users
Edge Storage	NAS / Local PC for Instant Recording / Micro SD Card Up to 128GB
Web Viewer	<IE11, Chrome, Fire Fox
Web Language	English, Chinese, Polish , Italian, Spanish, Russian, French, Czech, Hungarian, Portuguese
GENERAL	
Power Supply	DC12V / POE
Power Consumption	Max 5W
Operating Temperature	-10°C~55°C(14°F~131°F)
Storage Conditios	0~90%RH
Certification	CE / FCC
Ingress Protection	IP66
Casing	Metal
Dimensions	110 x 388mm
Net Weight	1900g

Dimensions

