

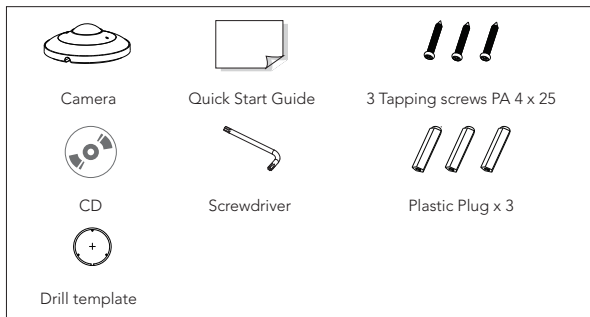
HD Network Fisheye Camera Quick Start Guide

Please read this instruction carefully and preserve it for further reference. All the examples and pictures used here are for reference only. There may be several technically incorrect places or printing errors in this manual. The update information will be added into the new version of this manual. The contents of this manual are subject to change without notice.

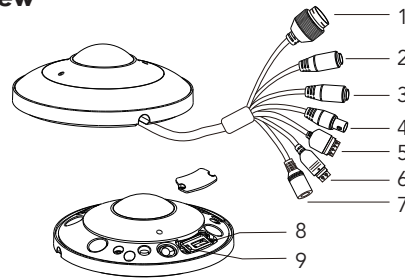
1. Warning and Caution

- If the product does not work properly, please contact your dealer or the nearest service center. Never attempt to disassemble the camera yourself. (We shall not be responsible for any problems caused by unauthorized repair or maintenance.)
- Keep away from liquid while in use.
- In the use of the product, you must be strict compliance with the electrical safety regulations of the nation and region. When the product is mounted on wall or ceiling, the camera shall be firmly fixed.
- Do not use camera beyond specified voltage range.
- Do not drop the camera or subject it to physical shock.
- Avoid touching the camera lens.
- If cleaning is necessary, please use clean cloth to wipe it gently.
- Do not aim the camera at the sun or extra bright place.
- Do not place the camera in extremely hot, cold (the operating temperature shall be -20°C ~ 50°C), dusty or damp locations, and do not expose it to high electromagnetism radiation.
- To avoid heat accumulation, good ventilation is required for operating environment.
- A few parts of the device shall be replaced regularly according to their average enduring time. Regular checking is recommended for all users.

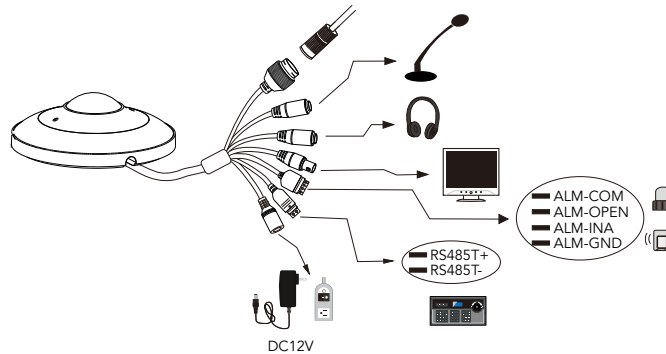
2. Package



3. Overview



1	Network Interface	6	RS485
2	MIC IN	7	DC12V Power Supply
3	HP Audio Output	8	SD Card Slot
4	Video Output	9	Reset
5	Alarm Input / Output		



* If the PoE switch is used to power the camera, DC12V power supply is not required.

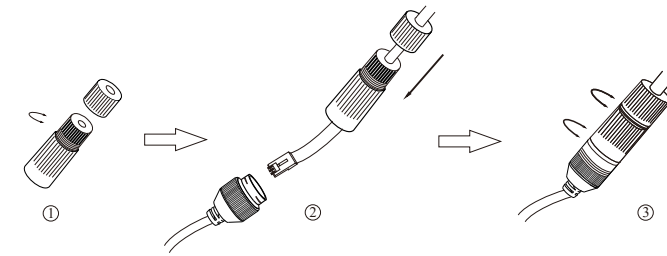
• Alarm Connection

Alarm Input: Join the grounding ends of the sensor and the camera and then connect the signal cable of the sensor to the alarm input port (ALM-INA) of the camera.

Alarm Output: Loosen the screws in the alarm output port. Then insert the signal wires of the alarm output devices into the port of COM and OPEN separately. Finally tighten the screws. Some of the external alarm output devices need the power supply.

• Connecting Network Cable

- ① Loosen the nut from the main element.
- ② Run the network cable (without RJ 45 connector) through the both elements Then crimp the cable with RJ 45 connector.
- ③ Connect the cable to the hermetic connector. Then tighten the nut and the main cover.

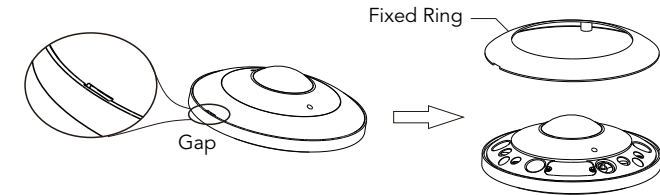


4. Installation

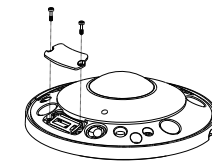
Please install and use the camera in the dry environment. You'd better install back the cover less than 4 hours after removing it.

• Install SD Card

- ① Remove the fixed ring from the gap of the camera.



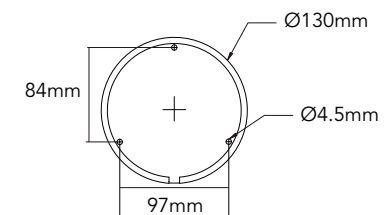
- ② Loosen the screws of the cover of the SD card and then insert the SD card. After that, install the cover back.



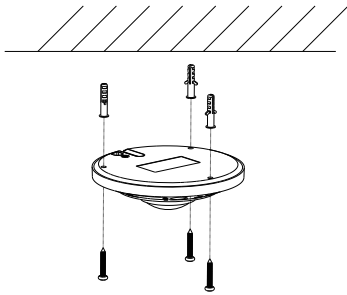
• Install Camera

Before installation, please make sure that the wall is strong enough to withstand 3 times the weight of the camera.

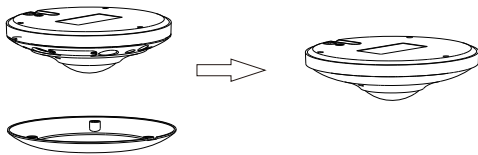
- ① Remove the fixed ring from the gap of the camera (see Install SD Card ①).
- ② Drill the screw holes and the cable hole on the wall according to the drill template.



- ③ Route and connect the cables.
- ④ Fix the camera to the wall with screws as shown below.

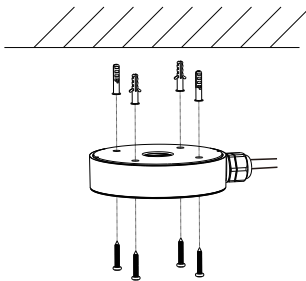


- ⑤ Install the fixed ring back to the camera.

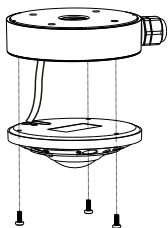


• Install Camera with Junction Box

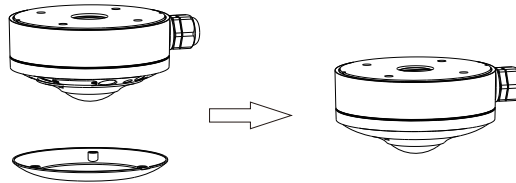
- ① Remove the fixed ring from the gap of the camera (see Install SD Card ①).
- ② Install the junction box onto the wall



- ③ Route the cables through the cable hole (take side conduit cabling for example.) and connect the cables. Then fix the camera onto the junction box with screws.



- ④ Install the fixed ring back to finish the installation.



5. IE Network Connection

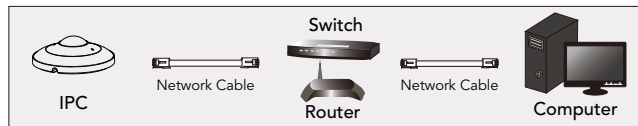
Here we take accessing the device via LAN for example. In LAN, there are two ways to access.

1. Access through IP-Tool;
2. Directly Access through IE Browser

The default network settings are as shown below:

IP address: 192.168.226.201 HTTP: 80
 Subnet Mask: 255.255.255.0 Data Port: 9008
 Gateway: 192.168.226.1

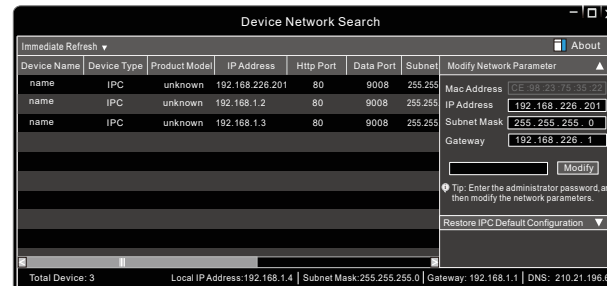
You may use the above default settings when you log in the camera for the first time.



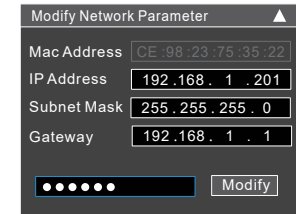
• Access through IP-Tool

2. Directly Access through IE Browser

- ① Make sure that the camera and the PC are well connected via LAN.
- ② Find the IP-Tool from the CD and then install it in the computer.
After that, run the IP-Tool as shown below.

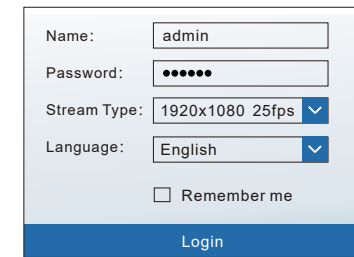


- ③ Modify the IP address. The default IP address of this device is 192.168.226.201. Click the information of the camera listed in the above table to show the network information on the right hand. Modify the IP address and gateway of the camera and make sure its network address is in the same local network segment as that of the computer. Please modify the IP address of your camera according to the practical situation.



For example, the IP address of your computer is 192.168.1.4. So the IP address of the camera shall be changed to 192.168.1.X. After modification, please input the password of the administrator and click "Modify" button to modify the setting. The default password of the administrator is "123456".

- ④ Double-click the IP address and then the system will pop up the IE browser to connect IP-CAM. Download the Active X control and run it in the computer. Then input the user name and password in the login interface.



The default username is **admin**; the default password is **123456**.

• Direct Access Through IE

- ① Make sure that the camera and the PC are well connected via LAN.
- ② Find the IP-Tool from the CD and then install it in the computer.
After that, run the IP-Tool
- ③ Modify the IP address and make sure its network address is in the same local network segment as that of the computer.
- ④ Open IE browser and input the modified IP address in the address bar to log in the IE client. If it is the first time for you to log in, you should download the Active X control and run it in the computer.
After that, input the default user name and password to login.