

AVC-EP71FT

720P HD-SDI FIXED LENS EYEBALL DOME CAMERA

HD-SDI
CAMERA



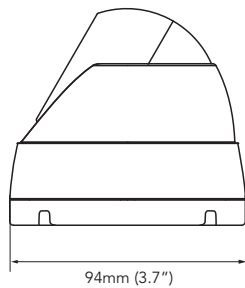
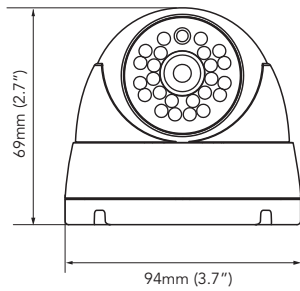
FUNCTIONS

- SDI Solution
- 1/2.9" Digital Image Sensor
- 720P HD-SDI
- 3.6mm Megapixel Lens
- 24 IR LEDs
- 0.3LUX (F1.2)
- Digital Noise Reduction
- ICR Filter Change Function
- IP67 (International Protection Rating)
- DC 12V(±10%)



DIMENSIONS

Unit : mm (inch)



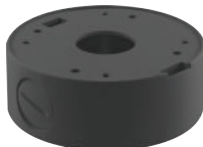
SPECIFICATIONS

DESCRIPTION	NTSC	PAL
Image Sensor	1/2.9" Digital Image Sensor	
Image Resolution	1312 x 740	
Scanning System	Progressive 60fps, 30fps	
Video Output	HD-SDI	
S/N Ratio	More than 50dB	
Min. Illumination	Color: 0.3Lux (F1.2)	
Iris Adjustment	N/A	
Lens	3.6mm Megapixel Lens	
Electronic Shutter	Auto	
OSD Language	N/A	
Backlight Compensation (BLC)	Auto	
Day & Night	External	
D-WDR	Off	
Auto Gain Control (AGC)	Auto	
White Balance	ATW	
Privacy Masking	N/A	
DNR	2DNR	
Smart IR (Anti-SAT)	Auto	
LSC	N/A	
Gamma	0.45	
Defog	N/A	
Digital Zoom	N/A	
Defect Correction	N/A	
Sens-up	N/A	
Motion Detection	N/A	
Digital Effect	N/A	
RS-485	N/A	
IR LED	24pcs	
Input Voltage	DC 12V (±10%)	
Power Consumption	IR Off: 60mA (Max.) / IR On: 210mA (Max.)	
Operating Environment	14°F ~ 122°F (-10°C ~ 50°C) / Max. 90% RH	
Storage Environment	-4°F ~ 140°F (-20°C ~ 60°C) / Max. 90% RH	

ACCESSORIES



AVM-EDMTS-W



AVM-EDMTS-G