



AVC-BNN41AVT-AI-SL

NDA
COMPLIANT

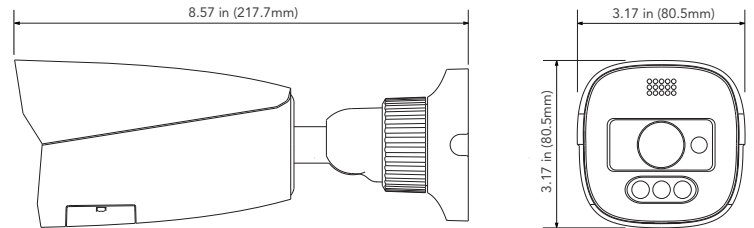
4MP SMART DEFENDER BULLET IP CAMERA

OVERVIEW

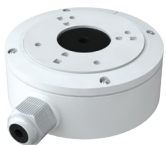
- 4MP H.265+/ H.265/ H.264+/H264/MJPEG coding
- Maximum Resolution: 2592 × 1520
- Motorized 2.8 - 12mm Zoom Lens
- Smart IR Illumination Up to 164ft (50m).
- 3D DNR, True WDR, HLC, BLC, Defog and ROI Coding
- True Day/Night
- Hardware Reset
- Built-in micro SD card slot with video and still image capture function (up to 256GB)
- Supports Three Streams
- NAT/P2P Function Optional
- Integrated Speaker and Warning LEDs to alert intruders when motion (Standard & Advanced) is detected
- Video Analytics: Video Exception Detection, Line Crossing Detection, Region Intrusion/Entrance/Exiting Detection, Heat Map, Face Detection, Target Counting by Line/Area, Video Metadata
- IP66 Outdoor Rating
- DC12V/PoE Power Supply

DIMENSIONS

Unit : inch(mm)



OPTIONAL ACCESSORIES



AVM-BDMT-W-TL1



AVM-DPMT-W-TL1



AVM-P-CMT



AVM-P-PMT

SPECIFICATIONS

CAMERA					
Image Sensor	1/3" Progressive Scan CMOS				
Image Size	2592 x 1520				
Shutter Speed	1/2s to 1/100,000s				
Iris Type	DC Iris				
Min. Illumination	Color: 0.005 lux @ F1.6(AGC ON); BW: 0 lux with IR				
IR Distance	Up to 164ft				
Lens	Motorized 2.8 - 12 mm @ F1.4 Horizontal FoV: 98° ~ 29° Vertical FoV: 54° ~ 16° Diagonal FoV: 118° ~ 32°				
Focus	Motorized				
Lens Mount	Ø14				
Day & Night	ICR				
Wide Dynamic Range	120dB				
Digital NR	3D DNR				
Backlight Compensation (BLC)	Yes				
Backlight Compensation (BLC)	Yes				
Defog	Yes				
S/N Ratio	≥50dB				
Angle Adjustment	Pan: 0°~360° ; Tilt: 0°~90° ; Rotation:0°~360°				
VIDEO IMAGE					
Video Compression	Main stream: H.265+ / H.265 / H.264+ / H.264 Sub/third stream: H.265+ / H.265 / H.264+ / H.264 / MJPEG				
H.264 Compression Standard	Baseline Profile / Main Profile / High Profile				
Resolution	4MP (2592 x 1520), 2K (2560 x 1440), 3MP (2304 x 1296), 1080P (1920 x 1080), 720P (1280 x 720), D1, 480 x 240				
Main Stream	60Hz: 4MP/2K/3MP/1080P/720P (1~30fps); 50Hz: 4MP/2K/3MP/1080P/720P (1~25fps); HFR mode: 1080P/720P (60Hz: 1~60fps / 50Hz: 1~50fps)				
Sub Stream	60Hz: 720P/D1/CIF (1~30fps); 50Hz: 720P/D1/CIF (1~25fps)				
Third Stream	60Hz: 720P/D1/CIF (1~30fps); 50Hz: 720P/D1/CIF (1~25fps)				
Video Bit Rate	64 Kbps ~ 8 Mbps (CBR / VBR Adjustable)				
Image Settings	ROI, Saturation, Brightness, Hue, Contrast, Wide Dynamic, Sharpness, Image Mirror, Image Flip, NR, etc. adjustable through client software or web browser				
ROI	Each ROI to be configured separately				
NETWORK / INTERFACE					
Network	1 x RJ45 10M / 100M Self-Adaptive Ethernet port				
Network Protocol	UDP, IPv4, IPv6, DHCP, NTP, RTSP, RTP, RTMP, RTCP, PPPoE, DDNS, SMTP, FTP, 802.1x, SNMP, UPnP, HTTP, HTTPS, QoS				
Interface Protocol	ONVIF				
Web Browser	IE 11 (Plug-in required) / Google Chrome 89.0+ / Edge 89.0+ / Firefox 87.0+ / Safari 14.0+				
Online Connection	Support simultaneous monitoring for up to 10 users; Support multi-stream real time transmission				
Security	Video encryption, firmware encryption, HTTPS encryption, configuration encryption, illegal login lock, IP address filtering, 802.1x authentication, basic and digest authentication for HTTP/RTSP				
Storage	Micro SD/SDHC/SDXC Slot (up to 256GB) with video and still image capture function				
Video Output	No				
Audio	1CH audio input; 1CH built-in speaker				
Audio Compression	G711A / U				
Alarm	1CH alarm input; 1CH alarm output				
Hardware Reset	Yes				
DORI DISTANCE					
	Lens	Detect	Observe	Recognize	Identify
	2.8 ~ 12mm (W)	195.73ft (59.66m)	78.31ft (23.87m)	39.14ft (11.93m)	19.58ft (5.97m)
	2.8 ~ 12mm (T)	709.67ft (216.31m)	283.85ft (86.52m)	141.92ft (43.26m)	70.96ft (21.63m)
FUNCTIONS					
Remote Monitoring	Web Browser Interface, Mobile App, AVYCON CVMS 2.0				
Smart Alarm	Motion detection, sensor alarm, SD card error, SD card full, IP address conflict, cable disconnection, light alarm, audio alarm				
Smart Analytics	Line crossing, region intrusion/entrance/exiting, loitering detection, illegal parking detection, abandoned/missing object detection, Target counting by line/intrusion area/heat map, exception detection, face detection and face capture				
Video Metadata	Simultaneously captures human body, motor vehicle and non-motor vehicle and extracts 13 human features, 5 motor vehicle features and 1 non-motor vehicle feature				
General Function	Watermark, IP address filtering, video mask, heartbeat, illegal login lock, corridor pattern				
GENERAL					
Power Supply	DC12V / PoE (IEEE 802.3af)				
Power Consumption	<12.5W				
Operating Environment	-22°F ~ 140°F (-30°C ~ 60°C) Humidity: less than 95% (non-condensing)				
Storage Environment	-22°F ~ 149°F (-30°C ~ 65°C) Humidity: less than 95% (non-condensing)				
Dimensions (in)	8.57 x 3.16 x 3.16				
Weight	Approx. 1.53 lbs				
Ingress Protection	IP66				
Certificate	CE, FCC				
Installation	Ceiling mounting; Wall mounting				
Environmental Protection	Complies with Directive EU RoHS, WEEE(2012/19/EU), directive 94/62/EC and REACH (EC1907/2006)				